



Wear Resistant Pipe

Zibo BOMAI Ceramic Materials Co.,Ltd

Address:High-Tech Devel Opment Zone,Zibo,Shandong,China

Tel:+86-533-3142011

E-mail:sales@wear-ceramic.com



Wear Resistant Pipe



Wear Resistant Pipe

Alumina wear-resisting ceramic composite: including a variety of pipe diameter of the straight pipe, bent pipe, elbow, reducing the size of the head. Is the use of ceramic metal composite production technology principle, through bonding, welding, inlaying, riveting and socket technology, will be a variety of wear-resistant ceramic sheet, plate, brick material composite in the wear surface of the pipe, so as to form a surface with excellent wear resistance, and the matrix is still using ordinary metal composite pipe. Compared with the traditional metal pipe fitting, the working face has higher wear resistance, which can make the whole wear resistance and corrosion resistance of the pipe fitting. Service life increases several times to dozens times above. The overall weight is greatly reduced, steel consumption is reduced, equipment cost and maintenance costs are reduced, and economic benefits are improved.



Zibo BOMAI Ceramic Materials Co.,Ltd

Address: High-Tech Development Zone, Zibo, Shandong, China

Tel: +86-533-3142011

E-mail: sales@wear-ceramic.com



Wear Resistant Pipe



Product features:

- ❖ Good wear resistance: wear-resistant ceramic pipe lining ceramic layer for wear resistance ceramics, its hardness HRA \geq 88, its wear resistance is high chromium wear resistant cast iron alloy pipe fitting more than 10 times, long service life.
- ❖ Corrosion resistance: the choice of different wear resistant ceramic materials, has excellent corrosion performance to different corrosive media, acid, alkali, salt and other strong corrosive media and halogen corrosion characteristics.
- ❖ High temperature resistance: wear-resistant ceramic itself has a high temperature resistance of more than 1400 °C , through reasonable design and use of different composite methods, wear-resistant ceramic pipe fitting can be long-term operation within the range of -50°C to 800°C , wear-resistant ceramic pipe, the product is cost-effective, can save maintenance, replacement of materials and costs and time. Light weight, easy to transport and install.



Zibo BOMAI Ceramic Materials Co.,Ltd



Address: High-Tech Development Zone, Zibo, Shandong, China

Tel: +86-533-3142011

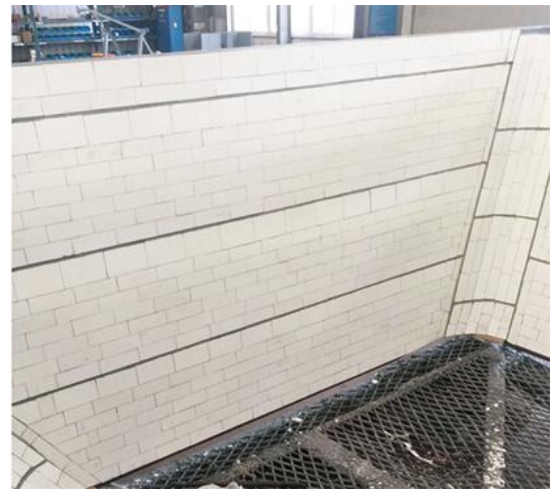
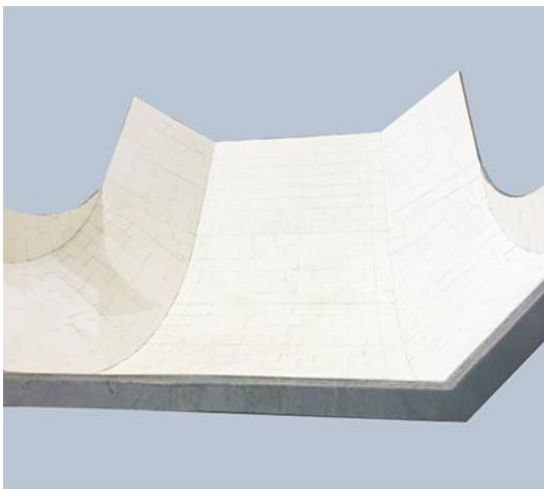
E-mail: sales@wear-ceramic.com

Wear Resistant Pipe



Product type:

- ❖ The wear-resistant ceramic pipe of SMT is made by sticking alumina ceramic plate on the inner wall of the pipe with high temperature resistant strong adhesive, and forming a firm anti-wear layer after heating and curing. The production process of the product is relatively simple, the production cycle is short, the cost is relatively low, and the ceramic pipe of the patch wear-resistant is not limited by the size of the pipe.
- ❖ Welding wear-resisting ceramic pipe is to use a strong adhesive to paste the middle hole alumina ceramic lining board on the inner wall of the pipe. Meanwhile, the ceramic lining board is solidly welded to the inner wall of the steel pipe through the small hole in cooperation with spot welding process, and then the ceramic cap is screwed on the top.



Zibo BOMAI Ceramic Materials Co.,Ltd



Address: High-Tech Development Zone, Zibo, Shandong, China

Tel: +86-533-3142011

E-mail: sales@wear-ceramic.com

Wear Resistant Pipe

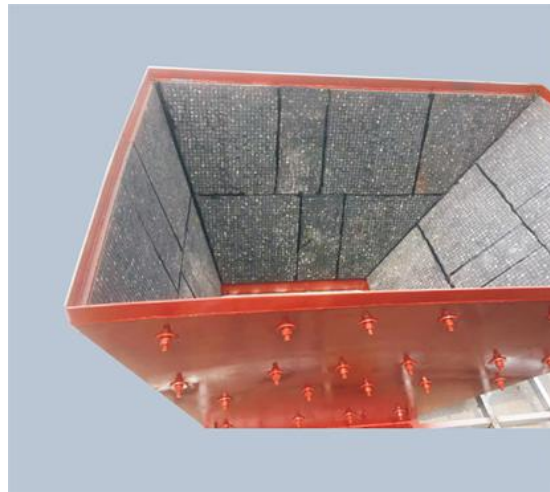
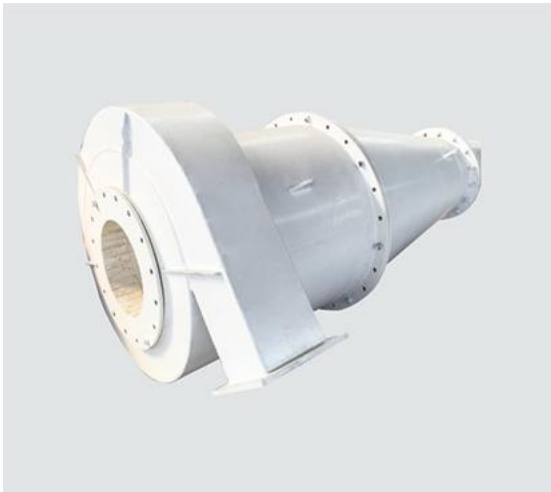


Product application range

Power industry, steel industry, cement industry, mineral processing industry, coal preparation industry, cyclone, silo, chute.

It includes powder conveying pipe, coarse and fine powder separator pipe, coal falling pipe, slag discharging pipe, powder returning pipe and dry ash conveying pipe

Dust collection pipe, circulating air pipe, feeding pipe, mixing pipe, coal burning pipe



Zibo BOMAI Ceramic Materials Co.,Ltd

Address:High-Tech Devel Opment Zone,Zibo,Shandong,China

Tel:+86-533-3142011

E-mail:sales@wear-ceramic.com



Wear Resistant Pipe



Zibo BOMAI Ceramic Materials Co.,Ltd

Address:High-Tech Devel Opment Zone,Zibo,Shandong,China

Tel:+86-533-3142011

E-mail:sales@wear-ceramic.com

